

W&H PEACOCK
AUCTIONEERS & VALUERS

Mid Century Design

Bedford Auction Centre
Friday 16th May | Commencing at 10.30am

Viewing: Friday 9th May 9am to 8pm
Saturday 10th May 9am to 5pm
Thursday 15th May 9am to 5pm
and morning of Sale from 9am
www.peacockauction.co.uk

- 1 A 1978 Mdina cased-glass 'Fish' vase, signed, h. 25 cm, together with a Mdina dump paperweight (2)

Est £80 - £120



- 2 Kjell Engman for Kosta Boda, a mottled burgandy glass 'Dino' vase, signed to the base, h. 40 cm

Est £80 - £120

- 3 Nils Landberg (Swedish, 1907-1991) for Orrefors, a cased-glass 'Dusk' vase, signed, initialled 'nu', indistinctly numbered, h. 16 cm

Est £40 - £60



- 5 William Wilson for Whitefriars, a 'Ribbed' amber glass vase, h. 24 cm, together with two similar era Whitefriars vases (3)

Est £70 - £100

- 7 An art glass bowl of flowerhead form in the manner of Murano, di. 19 cm, together with a blue glass bowl (2)

Est £30 - £40

- 6 William Wilson and Harry Dyer for Whitefriars, a pair of 'Knobbly' ruby red glass vases, h. 25 cm, together with an open controlled bubble bowl and a pink glass bowl of flower form in the manner of Josef Hospodka (4)

Est £80 - £120



- 8 A Steven Lovatt sculpture in the style of Henry Moore, mounted on a square plinth, h. 35.5 cm

Est £30 - £50

- 9 Betty Blandino (1927-2011), an eggshell stoneware vase with a grey mottled glaze, impressed seal to base, h. 32 cm

Est £400 - £600



- 10 Neil Tregear for Tregear Pottery, a stoneware vase decorated with birds in flight on a grey ground, monogram to the base, h. 18 cm, di. 13.5 cm, together with two matching jugs (3)

Est £80 - £120

- 11 Gordon Hoselton (Canadian, 1930-2003), a group of three aluminium sculptures including a penguin, seal and sealion together with a similar dish decorated with penguins (4)

Est £60 - £100



12



12

Tommaso Cimini for Lumina, a 1980's Italian 'ZED' table lamp, labelled to the base

Est £100 - £150

13

Tommaso Cimini for Lumina, a 1980's Italian 'ZED' table lamp, labelled to the base

Est £100 - £150

14



14

Donald Hume (Bank Robber), 'Dartmoor Prison Quarry', signed and dated 'Regensdorf Prison 1961', oil on board, image 34 x 25 cm, together with another oil of a squirrel by the same hand (2)

*See the newspaper article relating to his art show.

Est £100 - £150

15

Richard Bawden (1936-2024), 'Stealing Grapes', limited edition numbered 24/75, signed to the image, image 42 x 64 cm *From the estate of Jack & Molly Pritchard, founders of the Isokon firm and Isokon Furniture Company. The Pritchards lived for a while in the penthouse at the Lawn Road Flats in Hampstead and later at their Isokon bungalow in Blythburgh, Suffolk.

Est £40 - £60

16



16

Michael Forbes (b. 1968), 'Fools Seldom Differ', unsigned, oil on canvas, image 50 x 75 cm

Est £150 - £200

17



17

John Bratby RA (1928-1992), 'David Aged Four and Self October 1959' or 'Double Self Portrait', signed and dated, mixed media, image 57 x 61 cm, with sales receipt and exhibition flyer from Compendium Galleries 1970 *Artist Resale Rights may apply to this lot.

Est £1000 - £1500

18

20th Century, A rabbit seated in a sunny landscape, mixed media gouache, image 61 x 36 cm, reputedly this is one half of a poster which reached the final stage of a competition to advertise the London Underground Uxbridge Line, together with a French Row advertising lithograph after Verney L. Danvers, both currently framed on alternate sides (2)

Est £120 - £150

- 19 Nellie Blackmore for Poole Pottery, a large vase decorated in the EC pattern, numbered 85, 1974-76, h. 39cm
*The EC pattern was designed by Truda Carter in the late 20's/early 30's. It was revived in the mid-1970's as a technical demonstration of the painter's art.

Est £150 - £200

- 21 Keith Murray (1892-1981) for Wedgwood, a matt green rib vase on a footed base, signed to the base, di. 25 cm, h. 18 cm

Est £200 - £300

- 22 A 1960's Ercol 'Blue Dot' stacking chair with an elm seat and beech back

Est £50 - £70

- 20 Jessica Strang (1938–2021), an album of fruit and leaf type prints, inscribed 'For Jack - love Jessica Strang 9 June 1973' *Strang was an architectural photographer who took a well used marketing photo of Jack Pritchard reclining in an Isokon 'Long Chair'.

**From the estate of Jack & Molly Pritchard, founders of the Isokon firm and Isokon Furniture Company.

Est £40 - £60



- 23 A 1930/40's oak-finished cheval mirror of Art Deco form

Est £30 - £50

- 24 Arne Wahl-Iversen (Danish, 1927-2016) for Glyngore Stolefabrik, a set of four teak and seagrass seated dining chairs including two carvers, models 90 & 91, Danish stamp and maker's labels (4)

Est £200 - £300



- 25 A 2000's prototype 'Glove' lounge chair designed by Sir Terence Conran for Conran UK, the gloss black fibreglass shell with purple quilted leather upholstery, on a swivel and tilt brushed aluminium base *This colour version of the chair is the prototype that was never released in to mass production.

Est £500 - £700



- 26 A white painted scrolled coat rack and hall shelf, w. 113 cm
Est £40 - £60



- 27 A set of four Italian 'Cesca' type chairs with ebonised frames, bergere seats and cantilever bases, after the design by Marcel Breuer (Hungarian-American, 1902-1981)
Est £150 - £200



- 28 A pair of 'Westerham' easy chairs designed by William Plunkett (1928-2013) with brushed steel frames, nylon covered legs and Pirelli webbing upholstered in plum chenille *SFP
Est £500 - £700

- 29 Niels Otto Møller (Danish, 1920-1982) for J.L. Møller, a set of four 1970's Model 80 dining chairs with a dark oak stain and upholstered in cream leather, three stamped to the frames *SFP
Est £300 - £400



- 30 Attributed to Karl Dittert (German, 1915-2013), a Giroflex executive desk chair, the walnut shell with brown leather buttoned upholstery on a five-star swivel base with castors *SFP
Est £80 - £120

- 33 Geoffrey Baxter (1922-1995) for Whitefriars, a Textured Range 'Bottle' vase in tangerine, h. 20 cm
Est £80 - £120

- 34 Geoffrey Baxter (1922-1995) for Whitefriars, a Textured Range 'Drunken Bricklayer' vase in meadow green, 9673, h. 21.5 cm
Est £150 - £200

- 31 Geoffrey Baxter (1922-1995) for Whitefriars, a Textured Range 'Basket Weave' vase in tangerine, h. 27 cm
Est £200 - £300

- 32 Geoffrey Baxter (1922-1995) for Whitefriars, a Textured Range 'TV' vase in tangerine, h. 17 cm
Est £200 - £300





- 35** Geoffrey Baxter (1922-1995) for Whitefriars, a Textured Range 'Drunken Bricklayer' vase in aubergine, 9673, h. 21.5 cm

Est £150 - £200

- 36** Geoffrey Baxter (1922-1995) for Whitefriars, a Textured Range 'Drunken Bricklayer' vase in kingfisher blue, 9673, h. 20 cm

Est £120 - £150

- 37** Geoffrey Baxter (1922-1995) for Whitefriars, a Textured Range 'Mobile Phone' vase in meadow green, 9670, h. 16 cm

Est £150 - £200



- 38** Geoffrey Baxter (1922-1995) for Whitefriars, a Textured Range 'Mobile Phone' vase in aubergine, 9670, h. 16 cm

Est £150 - £200

- 39** Geoffrey Baxter (1922-1995) for Whitefriars, a Textured Range 'Mobile Phone' vase in kingfisher blue, 9670, h. 16 cm

Est £120 - £150

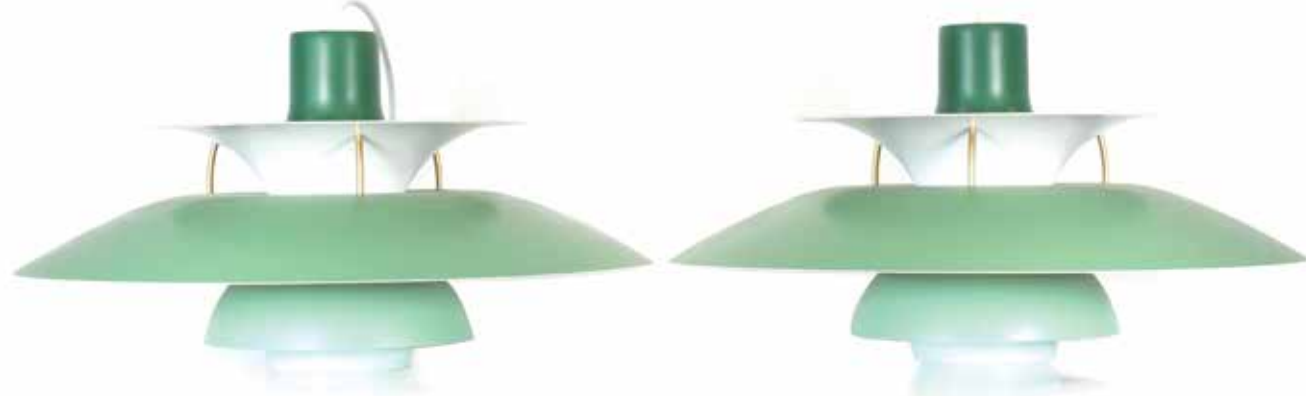
- 40** Vincente Boffo for Whitefriars, a 1960's sculpture modelled as a penguin in flint, with controlled bubbles to the interior, h. 13 cm

Est £100 - £150



- 41** Terence Conran for Habitat, a 'Mac Lamp' adjustable table lamp with a white enamelled shade

Est £40 - £60



- 42 Poul Henningson (Danish, 1894-1967) for Louis Poulsen, a pair of PH5 ceiling lights enamelled in pale green, white and red, label to interior, Type 18099 (2)
Est £400 - £600

- 45 A pair of Hornsea 'clip'n'carry' casserole dishes together with a Denby casserole dish (3)
Est £40 - £60



- 43 A 1950's red enamelled 'goose neck' adjustable table lamp
Est £40 - £60

- 44 Robert Welch for Old Hall, a stainless steel coffee pot, hot water jug and sugar bowl, together with a group of five Danish open bowls and a pair of Crayonne containers (10)
Est £70 - £100



- 46 A Poole 'Delphis' Range spear dish with a yellow ground, 31 x 20 cm, together with a Poole bowl and dish (3)
Est £30 - £50

- 48 A WMF cased canteen of cutlery together with a 1950's sputnik cigarette dispenser (2)
Est £30 - £40

- 50 A group of glass including a Stellaria candle holder by Tapio Wirkkala, two boxes of schnapps glasses designed by Timo Sarpaneva, a boxed Arnica vase and a pair of Italian red cased-glass vases (5)
Est £50 - £70

- 47 A Polish six-sitting coffee service by Cmielow decorated with a black and white sgraffito pattern
Est £30 - £40

- 49 A pair of stainless steel wall lights of cylindrical form (2)
Est £30 - £40

- 51 A 1950/60's 'Magic Box' or 'Desk in a Box' designed by Mummenthaler & Meier, the teak body with fitted interior and attached adjustable lamp, stamped 'Made in Norway', 82 x 54 x 113 cm closed
Est £200 - £300





- 52 Niels Gammelgaard for IKEA, a 'Moment' dining table or desk, the tempered glass surface within a brushed grey steel frame, 200 x 85 x 71 cm
*Winner of the 'Excellent Swedish Design' award.
Est £150 - £200

- 54 A pair of Ercol elm and beech easy chairs, Model 335, with loose seat cushions *SFP
Est £100 - £150

- 55 A 1950's green enamelled machinist's adjustable desk lamp, attached to an oak bracket
Est £40 - £60

- 53 A pair of Ercol 'Goldsmith' rocking chairs in elm and beech, Model 435 (2)
Est £100 - £150



- 57 'Stanley Kubrick's 2001: A Space Odyssey', film poster printed by Leonard Ripley & Co., 76 x 101 cm, together with another the same size for 'Exorcist II The Heretic' and six smaller posters for 'The Moonshine War', 'Treasure Island', 'Cinderella', 'Napoleon and Samantha', 'McHale's Navy' and 'The Pistolero of Red River' (8)
Est £200 - £300

- 56 A 1970's chromed steel and glass ceiling light or chandelier, probably Italian, in the style of Fontana Arte
Est £100 - £150



58



58

A 1950's Danish 'banana' sofa in pale orange and cream with beech feet, w. 200 cm *SFP

Est £400 - £600

59

A 1950/60's Danish beech and crossbanded two-drawer bedside cabinet on tapering circular legs, 58 x 30 x 53 cm

Est £80 - £120

60

A 1960's Danish teak three-drawer chest on circular tapering legs, 71 x 33 x 70 cm

Est £100 - £150

61

A 1980's occasional table with a smoked glass surface and brass-finished cylindrical legs, 75 x 38 x 36 cm

Est £40 - £60

60



62



62

A 1960's Danish pine single-drawer bedside table, 44 x 31 x 48 cm

Est £40 - £60

63



63

A 1950/60's Danish beech easy armchair with loose red check cushions *SFP

Est £60 - £100

64



64

Didier Gomez for Ligne Roset, a 'French Line' accent chair with grey upholstery, tube support cushions and stained frame, label to the upholstery

Est £60 - £80

65

A 1960/70's Greaves & Thomas bucket sofa upholstered in green on beech supports with brass-finished feet caps, w. 171 cm

Est £200 - £300

66

In the manner of Erik Worts (Danish, 1916 – 1997), an oak-framed three-seater sofa with loose blue cushions, l. 183 cm *SFP

Est £300 - £500



67

A pair of 1970's Swedish elbow chairs by Ferdinand Lundquist with stained oak frames and brown leather upholstery, labels to the frame *SFP

Est £150 - £200

67



69

A pair of black open pendant ceiling lights

Est £40 - £60

71



71

A 1960/70's Danish oak desk, the single suspended pedestal with two drawers, on square straight legs joined by stretchers, 110 x 64 x 70 cm

Est £200 - £300

68

A 1970's Danish white enamelled ceiling light of squat form constructed of six tiers

Est £30 - £50

70

A Danish beige enamelled pull down ceiling light by Horn

Est £30 - £40

72

A 1950/60's Danish stained beech tambour cabinet, the door enclosing a series of maple drawers, on a plinth base, 51 x 38 x 75 cm

Est £100 - £150



73

E. Gomme for G-Plan, a 1970's 'Libretto' system, the three sections highlighted in contrasting veneers with matt aluminium fittings, w. 290 cm, h. 212 cm

Est £100 - £200

74

Nils Jonsson (Swedish, 1914-1958) for Troeds, a 'Scania' teak and crossbanded extending dining table with two fitted leaves, 134-199 x 84 cm, on circular tapering legs, maker's stamp to the frame

Est £100 - £150

76

Ib Kofod-Larsen (Danish, 1921-2003) for Mogens Kold, a 1960's 'Adam' lounge chair with ziricote legs and purple leather upholstery, badge to the frame *SFP

Est £500 - £700

75

A 1960's Danish teak circular dining table, extending to oval with one fitted leaf, 108-155 cm, on square tapering beech legs

Est £80 - £120

77



77

A group of seventeen 1952-1999 Dutch KLM bols liqueur decanters modelled as buildings including Restaurant d'Vijff Vlieghen (The Five Flies), De Gecroonde Raep (The Crowned Turnip), house of Herman Boerhaave, De Drie Fleschjes (the three flasks), Mata Hari's love nest etc., numbers 2, 3, 3, 7, 9, 10, 16, 19, 20, 21, 17/25, 26, 27, 64, 79, 80, 80 (17)

Est £150 - £200



- 78** A Poole Pottery 'Delphis' Range vase decorated with orange and reds, impressed AWW (Alan White) and numbered 85, h. 35.5 cm, together with an open bowl, di. 26 cm, and a small vase (3)
Est £60 - £100



- 79** A Smiths Electric Clock SEC wall clock in a bakelite case, the dial signed 'Pleasance & Harper, Swansea', di. 36 cm
Est £80 - £120

- 80** A set of twelve lithographic German industrial prints including 'Hering-Einheistrader', 'Unionwerk Mea G.m.b.H.', 'Daag Lasto' etc., each image 30 x 20 cm (12)
Est £100 - £150

- 82** A Murano-style cased-glass vase of teardrop form with controlled bubbles and burgandy lines, h. 27.5 cm
Est £80 - £120

- 81** A 1970's Ellgreave Pottery Saxony six-sitting coffee service in sage green
Est £30 - £50

- 83** A pair of Murano-style globular green art glass vases with gold speck together with an abstract glass sculpture (3)
Est £60 - £80

- 84** A Dartington wine cooler/holder, h. 21 cm, together with a purple flared vase and a graduated pair of red overhanging vases (4)
Est £40 - £60



- 85** Susan Moxley (contemporary), A series of abstract shapes and figures, signed, dated '01, numbered 6/10, limited edition screenprint, image 49 x 35 cm, together with a further print of circles (2)
Est £30 - £50

- 86** Jean Isy de Botton (French, 1898-1978), 'Les Amoureux au Clair de Lune', signed and dated '64, labelled verso 'encre de chine et gouache', image 32.5 x 23.5 cm
Est £100 - £150

- 87** Ian Burke (Yorkshire, b. 1955), 'Recycled Sunday Morning', signed verso and dated 2009, silkscreen on French bed sheet, linen, 1900, image 50 x 79 cm
Est £100 - £200

- 88** Neil Matthews (Contemporary), 'Bev and Vomit', a pair of punks in Nottingham Square, signed, circa 1981-84, oil on canvas, image 59 x 75 cm
*As featured on Matthew's website: <https://www.neilmatthews.de/>
Est £150 - £200





90



89

Neil Matthews (Contemporary), 'Popeye', people in Nottingham Square, signed, circa 1981-84, oil on canvas, image 70 x 89 cm *As featured on Matthew's website: <https://www.neilmatthews.de/>

Est £150 - £200

90

Neil Matthews (Contemporary), 'Arizona 12', a pair of punks in Nottingham Square, signed, circa 1981-84, oil on canvas, image 33 x 50 cm *As featured on Matthew's website: <https://www.neilmatthews.de/>

Est £40 - £60

91

Simon Dixon (1966-2017), 'Elvis, 56', signed, artist's proof, image 85 x 85 cm

Est £80 - £120

92

After George Nelson (American, 1908-1986), a 'Star' wall clock with black, chromed and brass plated shafts, manufacture attributed to Vitra, total di. 61 cm

Est £80 - £120

93



93

Ferruccio Laviani (Italian, b. 1960) for Kartell, a pair of 'Take' polycarbonate table lamps in red and blue (2)

Est £60 - £100

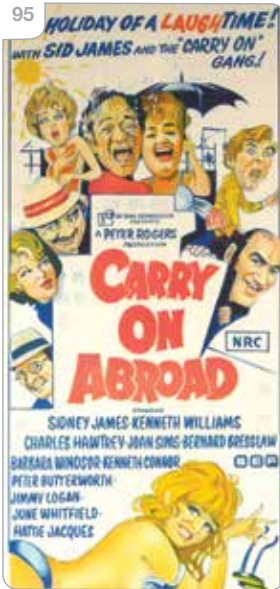
94

After David Hockney (b. 1937), 'My Mother (Bridlington)', 1988 Tate Gallery exhibition poster, offset lithograph poster on T.H. Saunders 'Waterford' paper, signed in black ink on the occasion of the artist's retrospective exhibition at the Tate Gallery. from the unnumbered edition of 250 printed by the Westerham Press, co-published by Tate Gallery Publications and The Mail on Sunday, with their certificate of authenticity, image 75 x 51 cm

Est £300 - £400

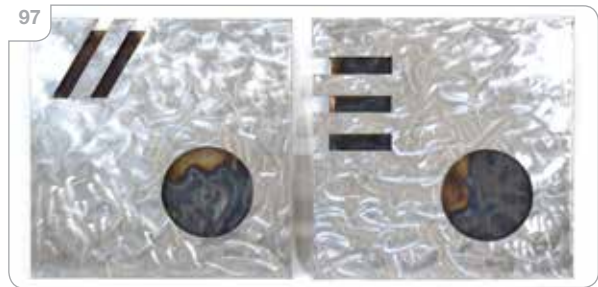


TATE GALLERY
DAVID HOCKNEY



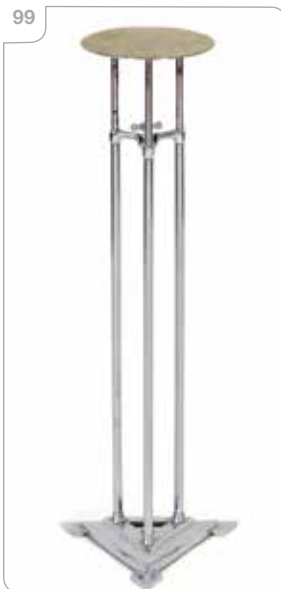
98 A set of four Heals grey scatter cushions
Est £20 - £30

95 'Carry on Abroad', lithographic film poster, printed by Robert Burton, Sydney, image 74 x 32 cm
Est £50 - £70



99 A chromed adjustable shop display stand in the Art Deco manner
Est £50 - £80

96 A 2004 Brutalist wall sculpture by Curtis Jere, signed, di. 82 cm, together with a copper-finished wall sculpture purchased from Heals (2)
Est £80 - £120



97 A pair of Modernist machine engraved square wall sculptures, 61 x 61 cm
Est £40 - £60

100 A 1980's Czech Pragatron industrial C301 clock, 34 x 34 cm
Est £80 - £120

Mid-Century Design Soft Furnishings Policy

The Furniture and Furnishings (Fire) (Safety) Regulations 1988 (as amended in 1989 and 1993) state that all soft furnishings holding foam must conform to BS 5852 standards. This means that any post-1988 furniture will need to bear a fire label for auction purposes.

The following exceptions apply:

- Items constructed pre-1950. [Regulation 4(a)]
- Items being sold to someone who is in the business of reupholstering furniture. [See Regulation 4[b] and Consumer Protection Act 1987, s.46(7)]
- Items being sold to someone who is in the business of dealing in furniture. [Regulation 14(1)]
- Items being sold that will not be used in a domestic setting in the UK; e.g. for export, for use in a museum or theatre, as a work of art. [Regulation 3(1a) and 4(c)]

The Mid-Century period has been recognised as an area of increased interest to collectors for many years now. The relevant soft furnishings in our sales have been carefully selected to be collector's pieces which are purchased for their design qualities.

Soft furnishings in this sale are being sold as collector's items and are NOT intended for private use in the UK. They may not be in compliance with the Furniture & Furnishings (Fire) (Safety) Regulations 1988 and should be re-upholstered to conform to BS 5852 prior to any use in a domestic dwelling.

Bids are only accepted on the agreement that the furnishings will not be used in a domestic dwelling in the UK.

This policy is in-line with all major UK auctioneers and the Mid-Century trade.

101 A 1960's Scandinavian teak shelf with two black tubular wall brackets, w. 75 cm
Est £30 - £40



103 A 1960's Danish teak cabinet or sideboard by Poul Hundevad (1917-2011), the doors enclosing a maple fitted interior, over three matching drawers, on circular tapering legs, w. 139 cm
Est £200 - £300

102 An American pecan and white painted sideboard by Kent Coffey with an arrangement of three drawers flanked by a pair of doors, w. 183 cm
Est £150 - £200

104 A 1960's Danish teak highboard, the three sliding doors enclosing a fitted mirror-backed interior, over three matching drawers, on circular tapering legs, w. 166 cm
Est £300 - £500

- 105** A Jens Risom (Danish-American, 1916-2016) teak desk with a fitted drawer, on a pair of later aluminium legs, label to the drawer, 206 x 90 cm
Est £80 - £120

- 106** A 1960's Danish four-seater sofa upholstered in green striped cloth, on six teak tapering legs, w. 220 cm *SFP
Est £300 - £500

- 107** Lord Norman Foster for Tecno, a 'Nomos' aluminium table base with a later rectangular glass surface, 160 x 80 cm
Est £200 - £300

- 108** A 1970's Danish grey enamelled three-tier ceiling light
Est £40 - £60

- 110** A 1970's Danish blue enamelled squat open ceiling light
Est £20 - £30

- 111** A 1970's Danish white enamelled five-tier ceiling light in the manner of Louis Poulsen
Est £50 - £70

- 109** A 1970's Danish brass-coloured open ceiling light
Est £30 - £40



- 112** Robert Heritage (1927-2008) for Archie Shine, a 1960's rosewood wall cabinet, five doors over a sliding door, fall-front, four small drawers and three large drawers, w. 230 cm, h.184 cm CITES Article 10 Transaction Specific Ref: 24GBA10DR488N
Est £150 - £200

- 114** A 1980's rosewood-finished and smoked glass wall cabinet comprising of three sections, made in Belgium, w. 256 cm, h. 198 cm
Est £60 - £100

- 112** A 1970/80's rosewood and crossbanded extending dining table, 136 x 90 cm, with two fitted leaves CITES Article 10 Transaction Specific Ref: 24GBA10Y4F909
Est £150 - £200

- 115** A Skovby 'Palis' rosewood-finished extending dining table with two fitted leaves, 100 x 148-248 cm, together with a set of six Danish dining chairs including two carvers by Preben Schou (7) *SFP
Est £200 - £300



116



116

A 1960's Staples & Co. 'Deauville' Range rosewood chest of five drawers with circular brass integral handles on a plinth base, 85 x 47 x 68 cm
CITES Article 10
Transaction Specific Ref: 24GBA10TZI06B

Est £300 - £500

117

A 1960's German rosewood coffee table with a tiled centre, on a matching frame, 104 x 104 x 48 cm
CITES Article 10
Transaction Specific Ref: 24GBA10YFU09Q

Est £200 - £300



118



118

Sigurd Ressell (Danish, 1920-2010), a 'Falcon' stool with chromed flat frame and black leather button upholstered seat, manufacture attributed to Vatne Mobler *SFP

Est £150 - £200

120



119

A 1970/80's chromed cantilever elbow chair with black leather slung seat and back, in the manner of Mart Stam (Dutch, 1899-1986)

Est £30 - £50

120

Richard Young for Merrow Associates, a nest of three 1970's rosewood and chrome occasional tables, max. 57 x 45 cm
CITES Article 10
Transaction Specific Ref: 24GBA10SU5R38

Est £250 - £300

121



121

Richard Young for Merrow Associates, a 1970's chrome, glass and rosewood two tier trolley on castors, 56 x 53 x 41 cm
CITES Article 10
Transaction Specific Ref: 25GBA10EDPOWF

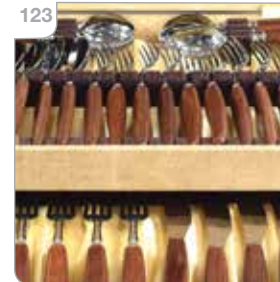
Est £250 - £300

122

Richard Young for Merrow Associates, a 1970's two-tier table with a glass surface, chrome frame and rosewood base, on castors, 53 x 55 x 41 cm
CITES Article 10
Transaction Specific Ref: 25GBA10XMHXZE

Est £200 - £300

123



123

A 1960/70's 'Glosswood' canteen of cutlery

Est £20 - £30

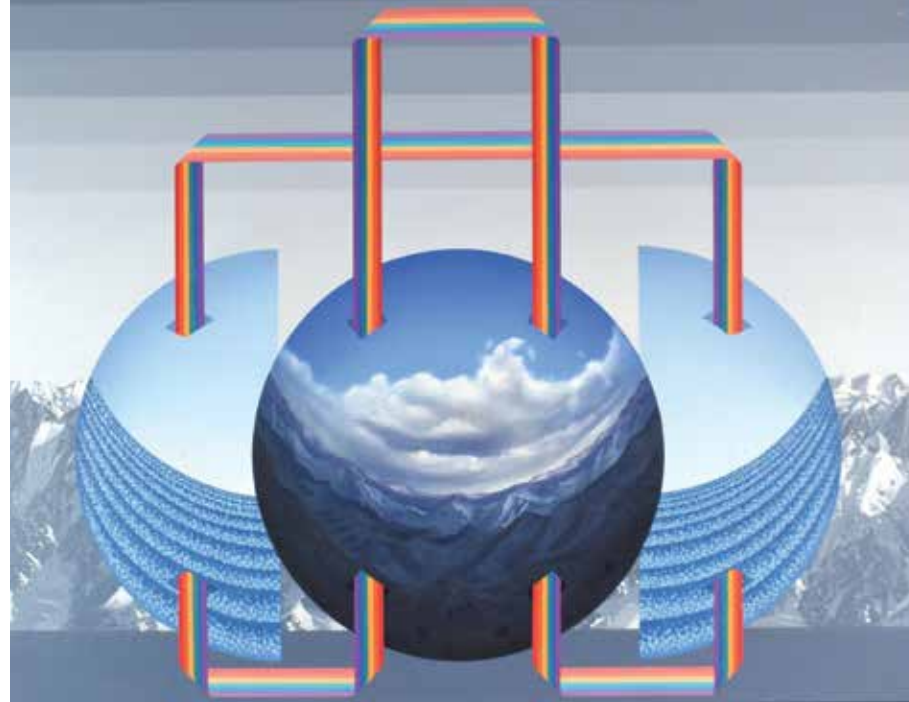


124 A 1980's stained elm occasional table, the cushioned square surface on four cylindrical legs, 70 x 70 x 50 cm
Est £30 - £50

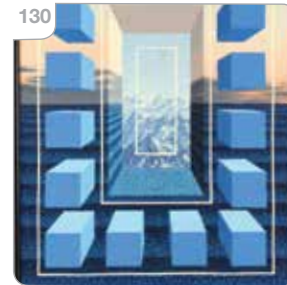
125 Rachel Jack (contemporary), Drops of water, oil on canvas, 80 x 160 cm
Est £40 - £60

126 Rachel Jack (contemporary), Swirls on a grey ground, oil on canvas, 70 x 180 cm
Est £40 - £60

127 A fibreglass figure modelled as Lara Croft, h. 87 cm
Est £200 - £300



130 A.J. Gray (contemporary), 'Window #1', signed verso, oil on canvas, image 36 x 25 cm
Est £50 - £80



128 Attributed to Eileen Gray (1878-1976) for Jumo, a 1970's N71 desk lamp, h. 40 cm *Please note that VAT will be added to the hammer price of this lot
Est £300 - £400

129 A.J. Gray (contemporary), 'Connections', signed verso, oil on canvas, image 62 x 63 cm
Est £100 - £150



131 James Seow (Malaysian born), 'Still Life II', signed, dated '12, numbered 19/50, photo etching and aquatint, image 39 x 51 cm

Est £30 - £50



133 Tom Dixon, a 'Melt Copper Mini' ceiling light, small pendant, contained in two boxes *Please note that VAT will be added to the hammer price of this lot.

Est £150 - £200

135 Tom Dixon, a 'Melt Copper Mini' ceiling light, small pendant, contained in two boxes *Please note that VAT will be added to the hammer price of this lot.

Est £150 - £200

132 Simon Tozer (contemporary), 'It's Love', signed and numbered 24/40, coloured screen print, image 10.5 x 11 cm

Est £80 - £120

134 Tom Dixon, a 'Melt Copper Mini' ceiling light, small pendant, contained in two boxes *Please note that VAT will be added to the hammer price of this lot.

Est £150 - £200

136 Tom Dixon, two 'Melt Copper' ceiling light fittings without the shades, large pendant, contained in two boxes *Please note that VAT will be added to the hammer price of this lot.

Est £60 - £80

137 A white glazed studio pottery object in the style of Henry Moore, indistinctly signed, h. 19 cm

Est £20 - £30



138 Attributed to Loetz, an iridescent glass 'Tulip' or 'Tulpen' vase, in the Orchis colourway, with five stems, h. 17 cm

Est £50 - £80



139 Bent Nordsted for Kastrup Holmegaard, a Danish red glass table lamp, maker's sticker to the base, h. 43 cm excl. shade

Est £150 - £200

140 A polychrome papier mache head with mouth, nose and eye holes, h. 45 cm

Est £80 - £120

141 After Keith Haring (American, 1958-1990), Poster (Pink) for 1983 Montreux Jazz Festival, lithograph printed on 170 gsm smooth art paper, 85 x 60 cm

Est £80 - £120



- 142** After Keith Haring (American, 1958-1990), Poster (Green) for 1983 Montreux Jazz Festival, lithograph printed on 170 gsm smooth art paper, 85 x 60 cm

Est £80 - £120



- 143** After Keith Haring (American, 1958-1990) and Andy Warhol (American, 1923-1997), Poster for the 20th Montreux Jazz Festival, screenprint in colours on smooth wove paper, printed by Albin Uldry, 85 x 60 cm

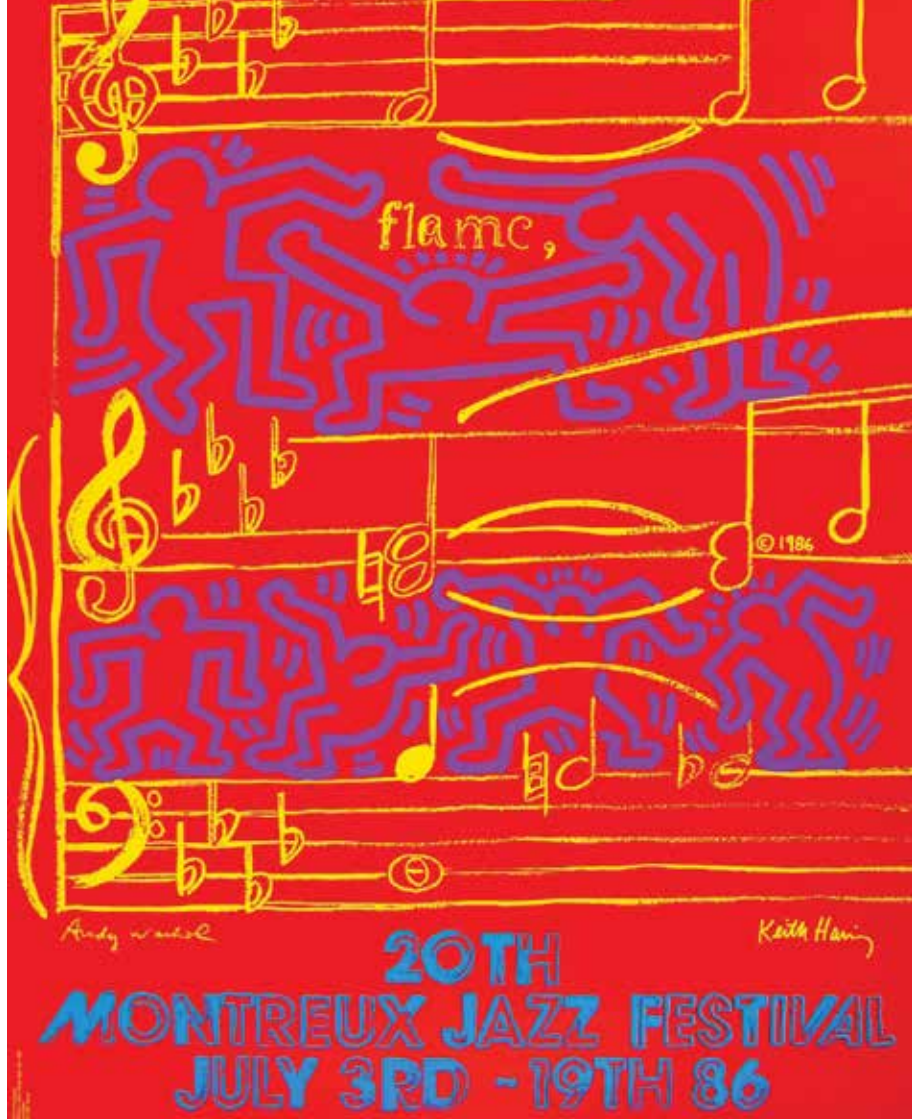
Est £150 - £200

- 144** After Julian Opie (b. 1958), 'Steve Guitar' (Steve Morse from Deep Purple) Poster for Montreux Jazz Festival 2006 Screenprint on 250 gsm wove paper, 100 x 70 cm

Est £150 - £200

- 145** After Marc Chagall (1887-1985), 'The Magic Flute (Die Zauberflöte)', off-set lithographic poster for Metropolitan Opera, 100 x 66 cm, together with 'Le Chevauchee' (Horse Ride)(2)

Est £60 - £80



- 146** After Marc Chagall (1887-1985), 'Enlèvement de Chloe' (Abduction of Chloe), off-set lithograph, 63 x 85 cm, together with 'Le Chevauchee' (Horse Ride), no text, both produced for Chagall at Pace/Columbus (2)

Est £30 - £50

- 147** After Alexander Calder (American, 1898-1976), off-set lithograph poster for Pace/Columbus Exhibition 1971, 25 x 32 inches

Est £30 - £50

- 148** After Andy Warhol (American, 1928-1987), 'Chanel No.5' (Dark Blue/Blue), lithographic print stuck to paper-backed linen, 48 x 69 cm

Est £180 - £220



- 149** After Andy Warhol (American, 1928-1987), 'Chanel No.5' (Blue/Green), lithographic print stuck to paper-backed linen, 48 x 69 cm

Est £180 - £220



151



150

After David Hockney (b. 1937), 'Mount Fuji and Flowers', off-set lithograph, 86 x 64 cm

Est £40 - £60

151

A pair of Barcalounger Spectra II lounge chairs with black leather upholstery and chromed flat frames *SFP

Est £600 - £800

152



152

A pair of 1960's Danish cloth upholstered armchairs with teak insets into the arms and teak legs *SFP

Est £200 - £300

153

A 1970's green woollen floor rug, 190 x 95cm

Est £30 - £40

154

A Metamec teak and brass finished 'sunburst' wall clock with battery quartz conversion, di. 58 cm

Est £30 - £40

155

An Avalon teak bookcase with two glass sliding doors over two drawers with scrolled handles, on triangular legs, 106 x 25 x 90 cm

Est £60 - £100

156

Nicholas (Nic) Ramsden (contemporary), 'Sacred Well', signed verso, oils and plaster, 122 x 146 cm, together with another matching and 'Sympathy' (3)

Est £120 - £150

157

Yogo (contemporary), A pair of seated ladies, each playing a wind instrument, signed and dated '07, oil on canvas, image 99 x 118 cm, together with another by the same hand (2)

Est £200 - £300



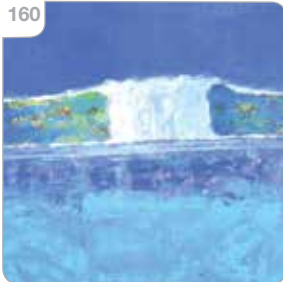


158 In the manner of Anders Leonard Zorn (Swedish 1860-1920), 'A group of men in discussion', signed 'Zorn', oil on canvas, image 86 x 86 cm

Est £50 - £100

160 Adrian Hemming (b. 1945), 'Incoming Waters', signed and dated 1999 verso, oil on canvas, 92 x 184 cm

Est £100 - £150



162 Adrian Hemming (b. 1945), 'Slow Wave Breaking', signed and dated '99 verso, oil on canvas, 92 x 154 cm

Est £100 - £150

163 Maggy Clarysse (1931-2011), 'Bull Terrier (Red Books)', signed, oil on canvas, 55 x 46 cm, together with another Bull Terrier (2)

Est £100 - £200



159 Sylvia Clark Molloy (1914-2008), 'The Changing Room', signed, oil on canvas, image 90 x 120 cm

Est £100 - £150

162 Frances Kelly ARHA (Irish, 1908-2002) 'Thoughts', signed, oil on canvas, image 91 x 60 cm

Est £100 - £200

164 Clifford Hanley (Scottish, 1948-2021), 'Shelley on Welshback', signed and dated '11, oil on canvas, image 69 x 60 cm, Royal Society of Portrait Painters exhibition label verso

Est £40 - £60



165 Clifford Hanley (Scottish, 1948-2021), 'Wading Softly', signed and dated '96, oil on canvas, image 102 x 51 cm, together with 'Five Already', 'Glow' and two others (5)

Est £80 - £120

166 Clifford Hanley (Scottish, 1948-2021), 'Quoi?', signed and dated '05, oil on canvas, image 66 x 45 cm, together with 'Cool & Freshly Lit', 'Breaking Loose' and 'Soaked in It' (4)

Est £50 - £80

167 A 1960/70's Polish Co-operative kilim depicting a farmer in a field setting, 86 x 123 cm

Est £50 - £80

168 After David Hockney (b. 1937), 'Mulholland Drive: The Road to the Studio', lithographic poster, produced by the Los Angeles County Museum of Art, 2021, 41 x 95 cm

Est £40 - £60

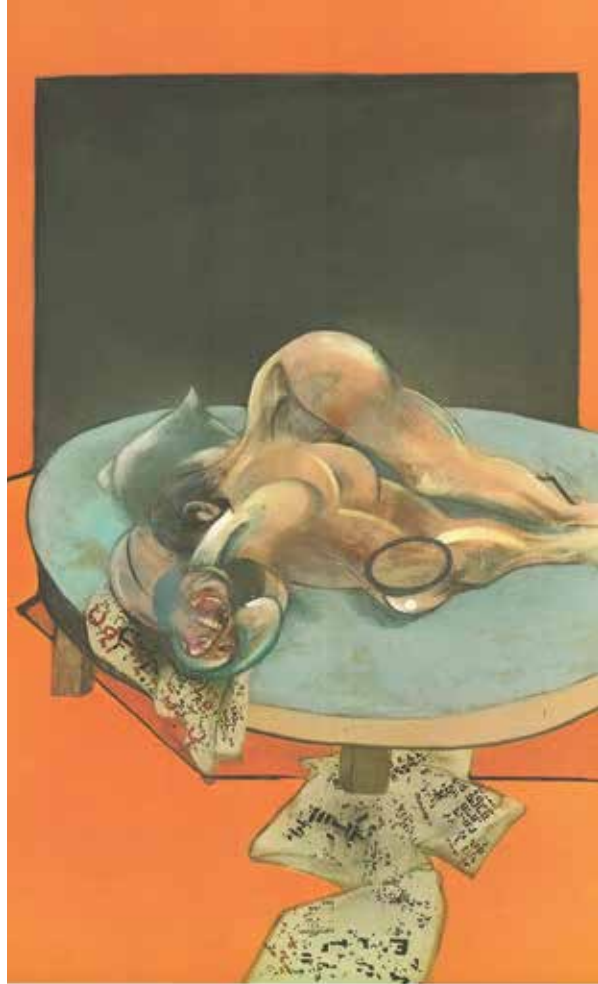


169 After David Hockney (b. 1937), 'Garrowby Road', lithographic poster, produced by the Museum of Fine Arts, Boston, 61 x 63 cm
Est £60 - £80

170 After Andy Warhol (American, 1928-1987), 'Marilyn-Orange shot on white background', off-set lithograph, Edition of 2,000 published by Te Neus in 1992, 31 x 23 inches, together with 'Princess Diana', Edition of 1,000 (2)
Est £50 - £80

171 After Sir Howard Hodgkin (1923-2017), 'The Sky's the Limit', serigraph, edition of 500, published by The Lincoln Center in 2003 76 x 83 cm
Est £50 - £80

172 After Francis Bacon (1909-1992), 'Figure in a Room', published by Marlborough Gallery, printed on heavy stock paper, 101 x 66 cm
Est £50 - £80



Francis Bacon
April 26-June 7, 1980
Marlborough



174 A pair of contemporary polished aluminium stools in the manner of Sara Mallone
Est £50 - £70

175 In the manner of Verner Panton (Danish, 1926-1998), a group of six contemporary 'Pantonova' style modular wire seats (6)
Est £150 - £200

176 A Danish white enamelled open ceiling light by Louis Poulsen, Type 17003, label to the interior
Est £30 - £40

177 A 1970's Danish brown enamelled industrial-style ceiling light
Est £30 - £50

173 After Henri Matisse (French, 1869-1954), 'Interior with Dog', 2 007 exhibition poster for 'The Baltimore Museum of Art', 71 x 66 cm, together with 'Composition Fond Bleu' (2)
Est £50 - £80



178 A 1970's brass coloured ceiling light with mustard perspex motifs
Est £30 - £40

179 Jonathan Shaw (b. 1959), A sunset over a beach, signed, acrylic on board, image 44 x 59 cm, together with two smaller by the same hand (3)
Est £60 - £100

180 An Italian silver-plated 'Canoa' centre piece by Zanotto, studio stamp to the side and numbered 3/2000 to the base, w. 100 cm

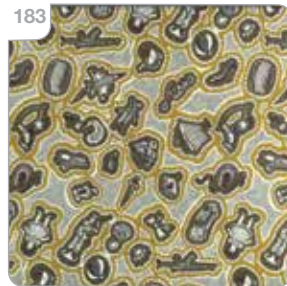
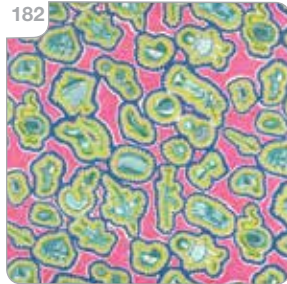
Est £50 - £80

181 Sir Grayson Perry CBE RA Hon FRIBA (b. 1960), 'Flo Liberty' fabric textile, circa 2008, green and grey colour scheme, image 29 x 39 cm

Est £50 - £80

182 Sir Grayson Perry CBE RA Hon FRIBA (b. 1960), 'Sissy Liberty' fabric textile, circa 2008, pink and green colour scheme, image 29 x 39 cm

Est £50 - £80



183 Sir Grayson Perry CBE RA Hon FRIBA (b. 1960), 'Sissy Liberty' fabric textile, circa 2008, khaki colour scheme, image 29 x 39 cm

Est £50 - £80

184 Sir Grayson Perry CBE RA Hon FRIBA (b. 1960), 'Our Town', printed on polypropylene, image 39 x 59 cm

Est £60 - £100

185 John Piper CH (1903-1992), Northern Cathedral, colour, circa 1962, screen printed cotton satin for Sandersons, image 44 x 59 cm

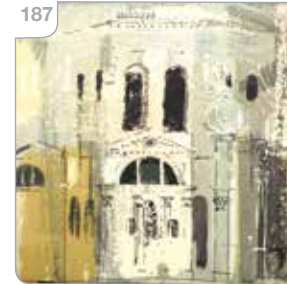
Est £100 - £150

186 John Piper CH (1903-1992), Northern Cathedral, circa 1962, screen printed cotton satin for Sandersons, image 44 x 59 cm

Est £100 - £150

187 John Piper CH (1903-1992), 'Chiesa Della Salute', circa 1960, screen printed cotton satin for Sandersons, image 39 x 49 cm

Est £100 - £150



188 John Piper CH (1903-1992), Stones of Bath, circa 1962, screen printed cotton satin for Sandersons, image 52 x 122 cm

Est £100 - £150





189



189

After Piero Fornasetti, a Cole & Son 'Fornasetti Collection' table, the circular surface on three 'hairpin' legs, di. 30 cm, h. 34 cm

Est £80 - £120

190

J.M. Richard and Eric Ravilious: 'High Street', the outer book boards/bindings, together with the lithographic inside cover and the binding of Louis MacNeice and Edward Bawden: 'The Sixpence that Rolled Away' (3)

Est £80 - £120

191

Lion and Unicorn Press: 'Sir Gawain and the Green Knight', limited edition 9/200 printed on Precision Offset Cartridge Paper, with twelve lithographs by Roy Morgan, within a green mottled folio slip case *From the estate of Jack & Molly Pritchard, founders of the Isokon firm and Isokon Furniture Company. The Pritchards lived for a while in the penthouse at the Lawn Road Flats in Hampstead and later at their Isokon bungalow in Blythburgh, Suffolk.

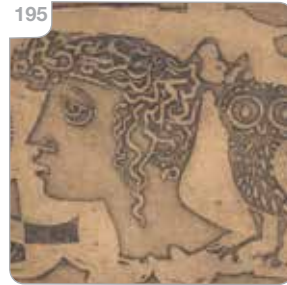
Est £200 - £300

192

A 1970's copper-coloured semi-spherical open ceiling light

Est £30 - £40

193



193

A 1970's Danish white enamelled open ceiling light

Est £30 - £40

194

A 1970's Danish brass coloured ceiling light with clear perspex motifs

Est £30 - £40

195

Elaine Alys Haxton (1909-1999), 'Archaic', limited edition 6/6 etching, signed, image 10 x 16 cm *From the estate of Jack & Molly Pritchard, founders of the Isokon firm and Isokon Furniture Company. The Pritchards lived for a while in the penthouse at the Lawn Road Flats in Hampstead and later at their Isokon bungalow in Blythburgh, Suffolk.

Est £30 - £40

196

Attributed to Cecil Higgs (South African, 1900-1986), A dark scene with blue to the background, signed Higgs and dated '51, pastel, image 17 x 25 cm *From the estate of Jack & Molly Pritchard, founders of the Isokon firm and Isokon Furniture Company. The Pritchards lived for a while in the penthouse at the Lawn Road Flats in Hampstead and later at their Isokon bungalow in Blythburgh, Suffolk.

Est £300 - £500

196



197 After Henry Moore (1898-1986), 'Minerve et Promethee devant la Statue de Pandore', lithograph in colours, image 31 x 24 cm *From the estate of Jack & Molly Pritchard, founders of the Isokon firm and Isokon Furniture Company. The Pritchards lived for a while in the penthouse at the Lawn Road Flats in Hampstead and later at their Isokon bungalow in Blythburgh, Suffolk.

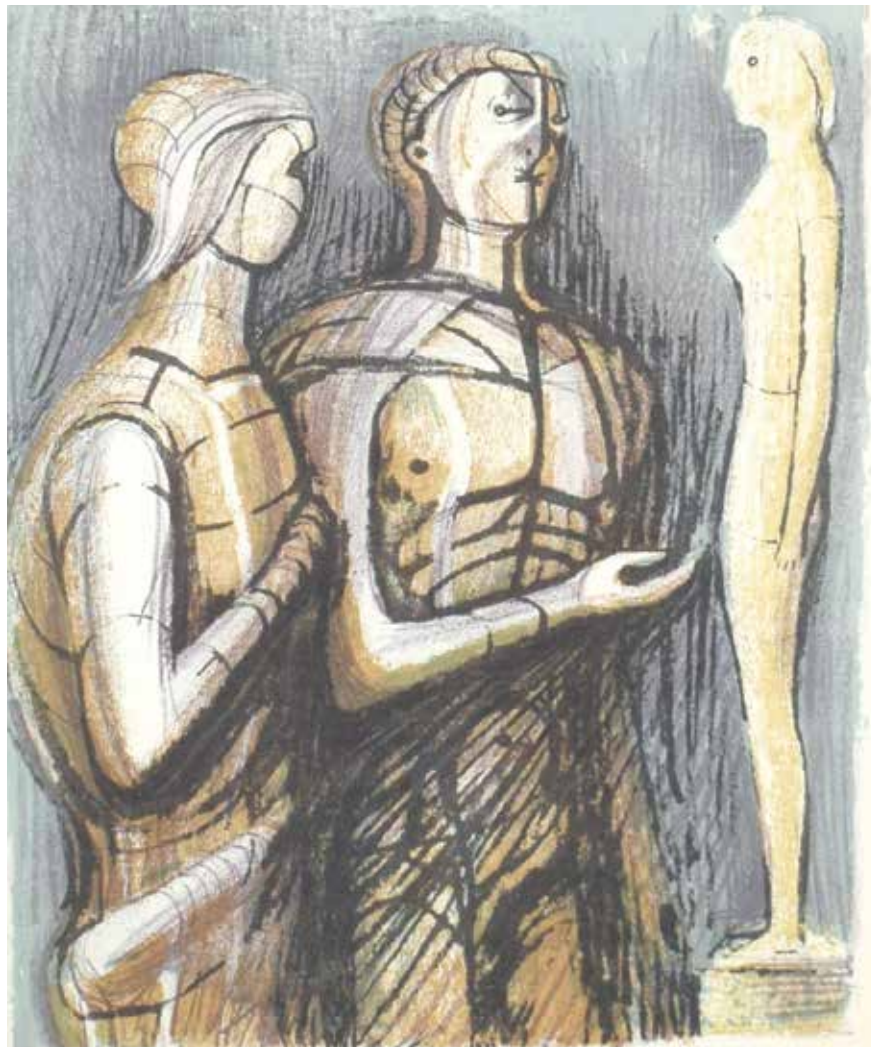
Est £150 - £200

198 After Paul Gauguin (French, 1848-1903), 'Women of Tahiti', coloured reproduction, image 53 x 74 cm *From the estate of Jack & Molly Pritchard, founders of the Isokon firm and Isokon Furniture Company. The Pritchards lived for a while in the penthouse at the Lawn Road Flats in Hampstead and later at their Isokon bungalow in Blythburgh, Suffolk.

Est £30 - £50

199 Wendy Sinclair (1932-2024), 'Cowslip', signed, oil on board, image 19.5 x 16.5 cm *From the estate of Jack & Molly Pritchard, founders of the Isokon firm and Isokon Furniture Company. The Pritchards lived for a while in the penthouse at the Lawn Road Flats in Hampstead and later at their Isokon bungalow in Blythburgh, Suffolk.

Est £30 - £50



200 20th Century School, Walberswick jetty, unsigned, pen and watercolour wash, image 24 x 31 cm *From the estate of Jack & Molly Pritchard, founders of the Isokon firm and Isokon Furniture Company. The Pritchards lived for a while in the penthouse at the Lawn Road Flats in Hampstead and later at their Isokon bungalow in Blythburgh, Suffolk.

Est £40 - £60



202 Rosemary Myers (contemporary), A cat, linocut and watercolour, signed, image 16 x 22 cm

Est £30 - £50

203 Robert Adam (contemporary), 'Midlothian Winter', signed, dated 1984 and numbered 8/50, coloured etching, image 9 x 9.5 cm, together with another matching (2)

Est £60 - £80

204 Nicholas Verrall (b. 1945), 'Otter Cub', limited edition lithograph, signed and numbered 203/300, image 28 x 33 cm

Est £50 - £70

205 Moss Fuller (b. 1937), 'Lenny's Hill', signed, dated 1989, numbered 5/30, limited edition print, image 31 x 40 cm

Est £80 - £120



207



Pauline Wood
(contemporary), 'Garden
of the Dispossessed',
signed and dated '09,
monoprint, image
46 x 45 cm

Est £100 - £150

208

Roger Strachan,
'Winter Farm', signed,
watercolour, image 36 x
51 cm

Est £30 - £50

206

Michael Bullen
(contemporary, Suffolk),
A coastal landscape,
signed, watercolour,
image 19 x 26 cm

Est £20 - £30



209

Achille Castiglioni (Italian,
1918-2002) for Flos, an
'Arco' floor lamp, Flos
label to the shade, on a
white marble base

Est £400 - £600



212

A pair of late 20th
century grey enamelled
circular ceiling lights of
squat form

Est £60 - £80

210

A 1970's Danish brown
enamelled ceiling light
with floral bands

Est £30 - £40

211

A 1970's Danish white
enamelled pull-down
ceiling light

Est £30 - £40

213

A 1970's Danish brown
enamelled cylindrical
ceiling light by Fog &
Morup, label to the top

Est £30 - £40

213



214

A 1970's Danish brass
coloured semi-spherical
ceiling light

Est £20 - £30

215



215

After Ludwig Mies van
der Rohe (German-
American, 1886-1969), a
pair of 'Barcelona' type
chairs, probably 1970's,
the brown leather button
upholstered seats on
flat polished frames,
unsigned *SFP

Est £300 - £500



- 216** Niels Otto Moller (Danish, 1920-1982) for J.L. Moller, a set of four Model 75 teak dining chairs with seagrass seats, badges to frames, together with a teak and crossbanded drawer-leaf rectangular-to-oval dining table, di. 150 cm (5)

Est £800 - £1200

- 217** Harry Bertoia (Italian/American, 1915-1978) for Knoll, a 'Bird' lounge chair with wirework mesh frame and black cloth upholstery, Knoll signature to the frame *SFP

Est £300 - £500



218



- 222** A pair of 1970's Danish brown enamelled pendant ceiling lights

Est £50 - £70



- 218** Attributed to Harry Bertoia (Italian/American, 1915-1978) for Knoll, a set of four Model 420 side chairs with original Knoll seat pads, frames unsigned *SFP

Est £300 - £400

- 220** After Charles Eames (American, 1907-1978) & Ray Eames (American, 1912-1988), an 'EA108' style desk chair with black mesh seat and five star swivel base on castors, manufactured by ICF *SFP

Est £50 - £80

- 223** Philippe Starck (French, b. 1949) for Kartell, a set of six 'Victoria Ghost' grey polycarbonate stacking chairs, moulded maker's marks to the backs of the seats

Est £150 - £200

- 219** After Harry Bertoia (Italian/American, 1915-1978) for Knoll, a set of four late 1990's bar and counter stools, with one Knoll and two other seat pads *SFP

Est £80 - £120

- 221** A 1970's Danish white enamelled open ceiling light

Est £30 - £40



224 Attributed to Vico Magistretti (Italian, 1920-2006), a set of four beech framed 'Carimate' elbow chairs or armchairs with drop-in seats *SFP

Est £200 - £300

224



225 Attributed to Vico Magistretti (Italian, 1920-2006), a set of six beech framed 'Carimate' dining or side chairs with drop-in seats, together with a matching stool (7) *SFP

Est £200 - £300



229



228 A group of glass including a contemporary table-centre, a Mdina paperweight, a Swedish Ekenas glass bowl, two 'medicine' bottles etc. (6)

Est £50 - £80

229 Royal Copenhagen and Fog & Morup, a set of three 1960's lamp bases, 92-7193, 719-3595, h. 27 cm incl. fittings (3)

Est £100 - £150

231

Two large 'Capiz Shell' hanging ceiling lights or chandeliers of cascading form (2)

Est £150 - £200

232



226

Attributed to Josef Hospodka (Czech, 1923-1989), a Chribska cased-glass vase of organic form, h. 23 cm, together with a similar bowl (2)

Est £40 - £60

230

A Gordon Russell cantilever reception chair with a faux walnut shell *SFP

Est £40 - £60

227

A Whitefriars 'Controlled Bubble' vase in amber, label to the side, h. 18 cm, together with a 'Textured Range' bud vase (2)

Est £40 - £60

230



232

Henderson Cisz (Brazilian-born, contemporary), 'Winter Evening in New York', signed and numbered 63/195, image 66 x 66 cm

Est £60 - £100



233 Henderson Cisz (Brazilian-born, contemporary), 'New York by Night', signed and numbered 192/195, embellished giclee on canvas, image 61 x 61 cm

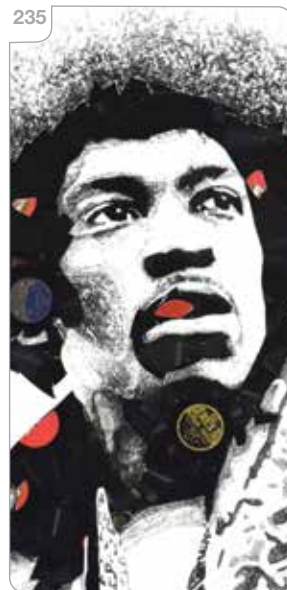
Est £80 - £120

234 Paul Karslake FRSA (British, 1958-2020) Marilyn Monroe, signed and dated '15, oil on canvas, image 100 x 75 cm, *Artist Resale Rights may be applicable to this lot.

Est £800 - £1200

235 Ben Riley (b. 1981), 'Escape to Happiness', Jimi Hendrix constructed from Polydor vinyl records, inscribed verso, image 100 x 75 cm

Est £300 - £400



236 Matthew Bellamy (contemporary), 'Spiderman', signed, oil on board, image 48 x 100 cm

Est £200 - £300



237 Ben Jeffery (b. 1986), 'Superman (Christopher Reeve)', signed, oil on canvas, image 49 x 98 cm

Est £150 - £200



238



238

Charles Eames (American, 1907-1978) & Eero Saarinen (Finnish-American, 1910-1961) for Vitra, a set of six 'Organic' highback reading chairs upholstered in brown, labels to bases *SFP

Est £600 - £800

239

Charles & Ray Eames for Vitra, a 2011 Elliptical Table ETR, the black surfboard laminate surface on aluminium rod supports, label to the underside, 227 x 75 cm

Est £300 - £500



240

Arne Jacobsen (Danish, 1902-1971) for Fritz Hansen, a pair of 2004 'Swan' chairs upholstered in brown, retailed by Aram, labels to bases *SFP

Est £1200 - £1500

241

Lord Norman Foster (b. 1935) for Tecno, a 'Nomos' meeting table, the 15mm oval glass surface on a matching frame, 240 x 110 cm

Est £800 - £1200

241



242

Vincent Van Duysen for Flos, a 2020 'Oblique' desk lamp, boxed, together with a Horizon LED task lamp, boxed (2)

Est £50 - £70

Hammer Prices - Bedford, February 2025 Sale

1 £2400	36 £70	83 £240	123 £35	163 £220	205 £110	257 £85	301 £1500	333 £60
2 £1800	37 £130	84 £45	124 £320	165 £260	206 £180	259 £55	302 £700	334 £30
3 £550	38 £50	85 £50	125 £20	166 £190	208 £100	260 £260	303 £70	335 £220
4 £1200	39 £260	86 £65	126 £360	167 £150	209 £85	261 £35	304 £55	336 £420
5 £550	40 £260	89 £220	127 £440	168 £260	210 £1400	262 £160	305 £200	337 £110
6 £480	41 £260	90 £55	128 £20	169 £240	211 £50	263 £40	306 £55	338 £130
7 £900	43 £55	91 £65	129 £550	170 £280	212 £260	265 £22	307 £45	339 £180
8 £260	44 £35	92 £170	130 £190	171 £220	213 £700	266 £35	308 £75	340 £600
9 £300	46 £70	93 £50	131 £75	172 £260	214 £170	269 £80	309 £700	341 £420
10 £320	47 £280	94 £280	132 £50	173 £60	215 £220	270 £40	310 £650	342 £260
11 £300	48 £360	95 £70	133 £75	174 £120	216 £90	271 £50	311 £190	343 £150
12 £220	49 £220	96 £30	134 £240	176 £100	217 £1000	273 £180	312 £300	344 £160
13 £800	50 £260	97 £45	135 £140	178 £130	218 £40	274 £60	313 £650	345 £110
14 £320	51 £100	98 £180	136 £40	182 £160	219 £70	275 £22	314 £420	346 £100
15 £380	53 £480	99 £10	138 £60	183 £40	221 £200	276 £280	315 £200	347 £20
16 £160	54 £30	100 £130	139 £35	184 £35	222 £100	277 £26	317 £200	348 £85
17 £190	55 £22	101 £240	140 £28	185 £140	223 £55	278 £60	319 £10	349 £220
18 £130	56 £30	103 £24	141 £280	186 £160	224 £20	279 £55	322 £180	351 £100
19 £85	58 £28	104 £50	142 £95	187 £240	225 £75	280 £340	323 £30	352 £550
20 £100	59 £22	105 £50	143 £35	188 £35	227 £30	281 £800	325 £35	353 £24
20 £0	60 £95	106 £40	146 £24	189 £75	228 £30	282 £240	327 £120	
21 £60	61 £40	107 £45	148 £380	190 £30	229 £85	283 £300	330 £80	
22 £70	63 £45	109 £65	149 £300	191 £50	230 £30	284 £170	331 £60	
23 £55	64 £30	110 £30	150 £55	192 £160	231 £110	285 £160	332 £60	
24 £300	65 £45	111 £16	151 £220	193 £120	232 £95	286 £460		
25 £200	66 £70	112 £24	152 £170	194 £20	235 £360	287 £1200		
26 £320	67 £420	113 £50	153 £170	195 £50	238 £400	288 £280		
27 £1100	68 £80	114 £85	154 £170	196 £24	239 £45	289 £60		
28 £1400	69 £22	115 £2800	155 £130	197 £45	240 £45	290 £460		
29 £3300	70 £50	116 £300	156 £40	198 £40	243 £190	291 £85		
30 £140	71 £75	117 £50	157 £10	199 £300	244 £75	292 £80		
31 £100	72 £45	118 £140	158 £28	200 £50	246 £80	294 £65		
32 £40	73 £100	119 £360	159 £16	201 £500	247 £75	295 £75		
33 £150	77 £80	120 £50	160 £10	202 £320	250 £65	297 £45		
34 £200	81 £150	121 £26	161 £40	203 £220	253 £200	298 £320		
35 £80	82 £2300	122 £35	162 £220	204 £170	256 £65	299 £70		

Next Sale

Bedford Auction Centre
Friday 15th August 2025
Commencing at 10.30am

Visit our website for full details
www.peacockauction.co.uk

Retro Video Games & Consoles

TO BE SOLD BY LIVE AUCTION

Thursday 3rd July 2025

Commencing at 10am

We are now inviting entries for this forthcoming specialist sale.
If you own anything which you think might be suitable we are
happy to give complimentary auction advice.
Please contact auctioneer Harry Shiner on 01234 266 366 or
harry@peacockauction.co.uk

SALE ENTRIES NOW INVITED

St Neots Auction Centre
75 New Street, St Neots, PE19 1AJ
01480 474 550 or info@peacockauction.co.uk

peacockauction.co.uk

Jewellery, Coins & Watches

TO BE SOLD BY LIVE AUCTION

Friday 6th June 2025

Commencing after 2pm

Viewing:

Friday 30th May 9am to 8pm

Saturday 31st May 9am to 1pm

Thursday 5th June 9am to 5pm

Morning of sale from 9am to 10:30am

Bedford Auction Centre

Wallis Way, Bedford, Bedfordshire, MK42 0PE
01234 266 366 or info@peacockauction.co.uk

peacockauction.co.uk